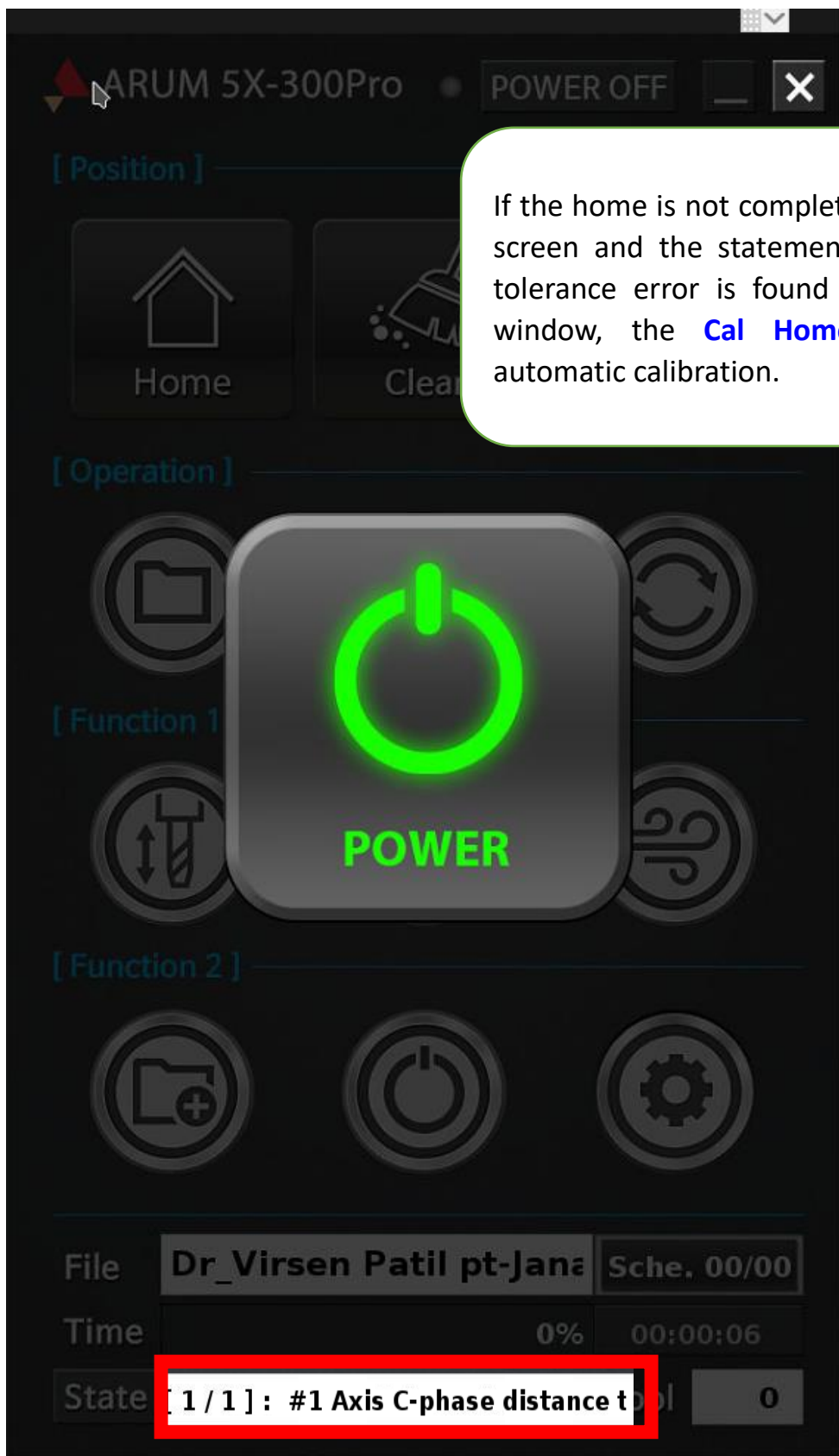
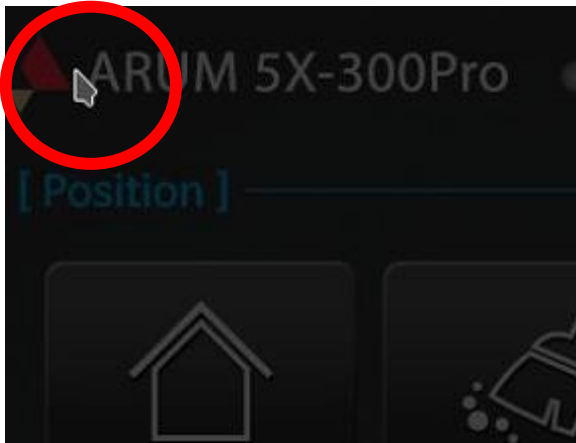


5X300P - C Phase distance error occurs during home operation.

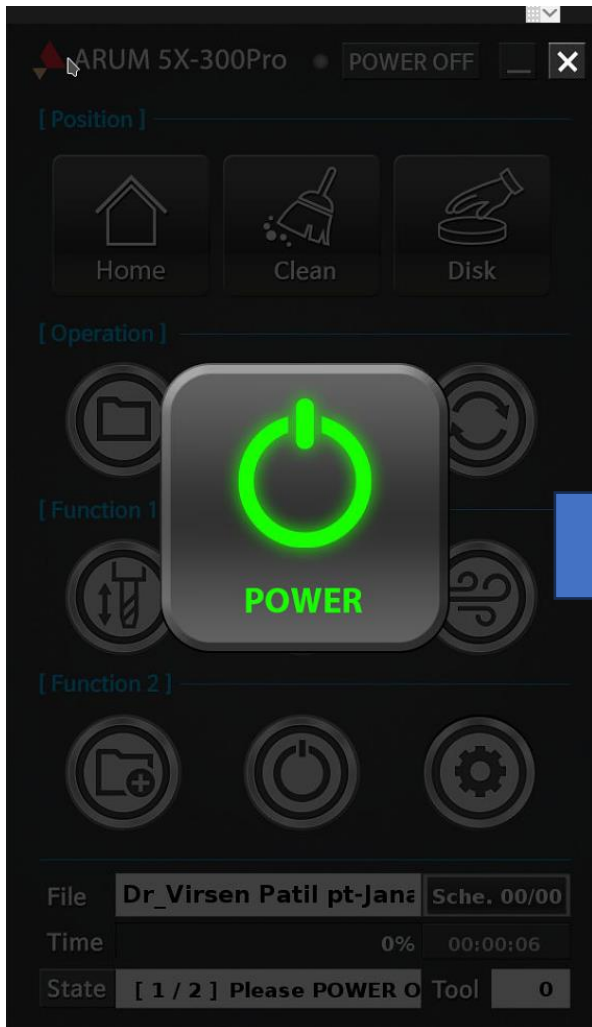


If the home is not completed on the following screen and the statement C phase distance tolerance error is found in the lower state window, the **Cal Home** function allows automatic calibration.

5X300P - C Phase distance error occurs during home operation.



To make the power button icon disappear, touch the top left



5X300P - C Phase distance error occurs during home operation.



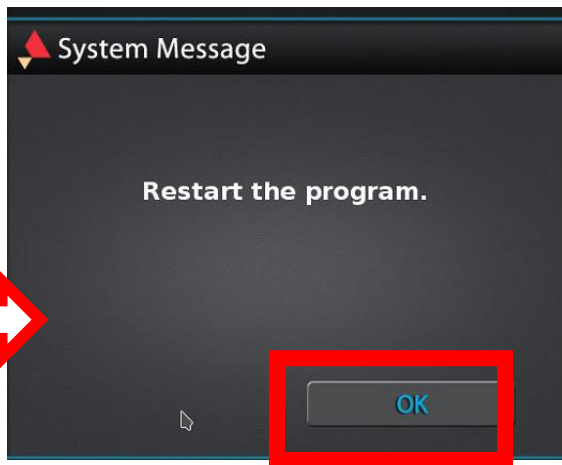
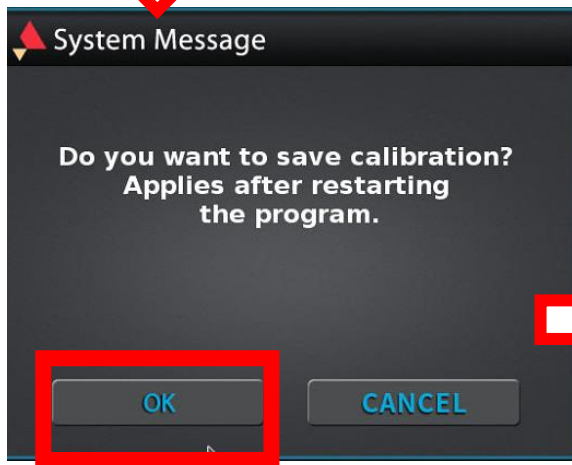
Click Settings window



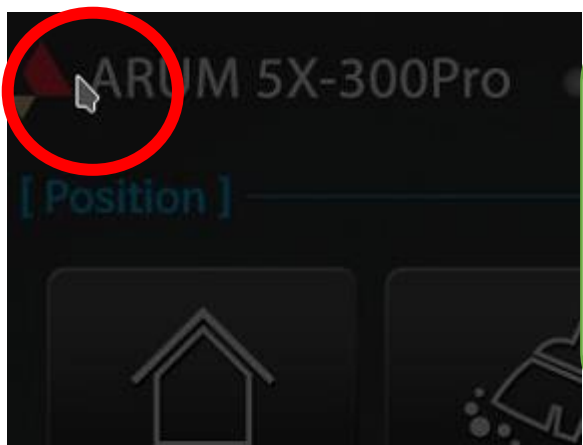
Please select Auto Calibration



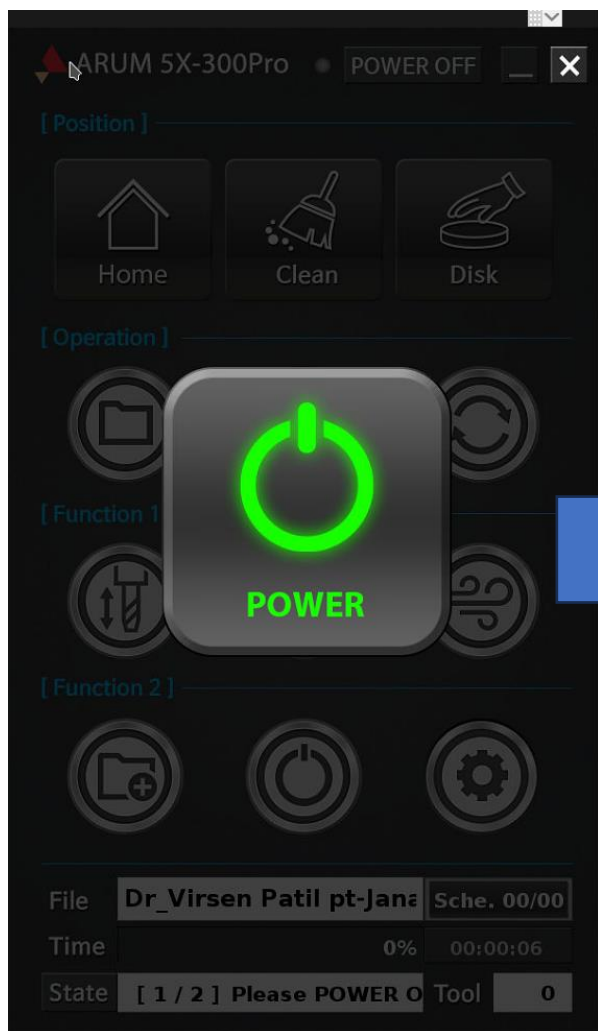
Like Auto Calibration, click CAL ON to automatically restart the CAL ON MODE.



5X300P - C Phase distance error occurs during home operation.



If restart, click the left upper end of the POWER icon to create the POWER icon.



5X300P - C Phase distance error occurs during home operation.



Press the POWER ON button.



When it's POWER ON, the START Pos. icon comes out in the middle. Click on the top left to make the icon disappear

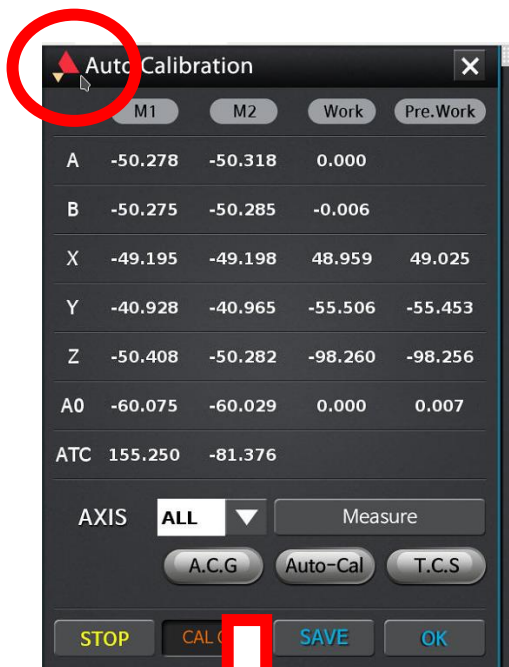


Please click Settings window again

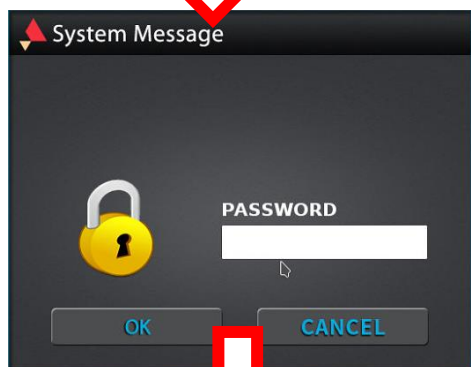


And please select Auto Calibration

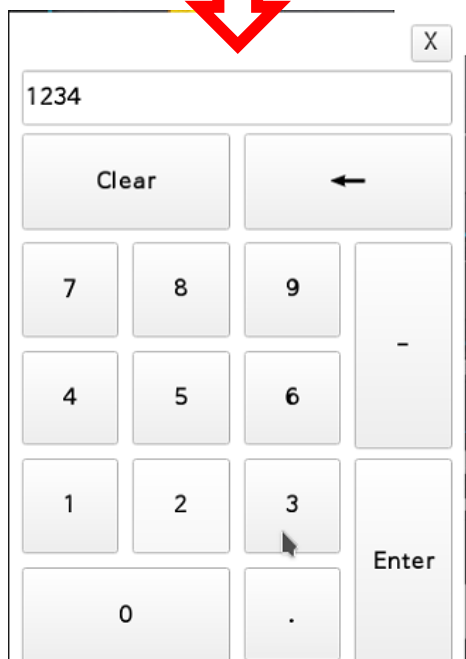
5X300P - C Phase distance error occurs during home operation.



Double-touch the Areum logo on the side of Auto Calibration.

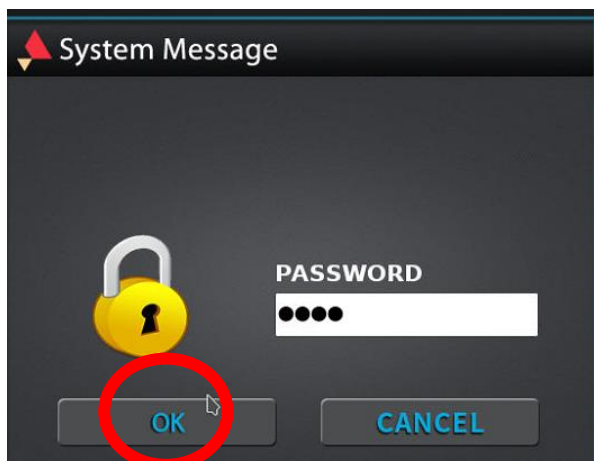


The system message difference appears and the PASSWORD input window appears. Please touch the PASSWORD input window

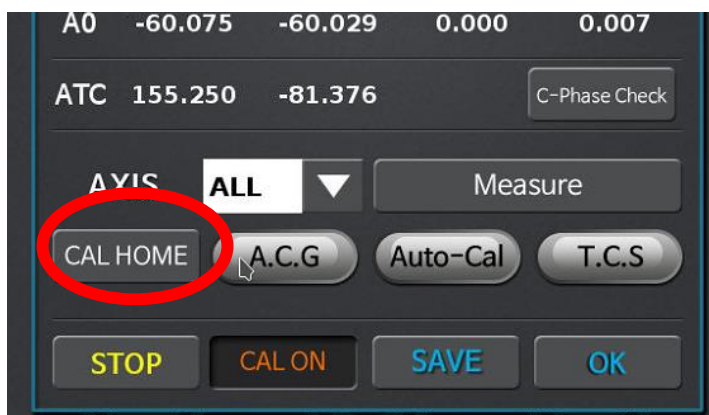


When the numeric pad window appears, touch 1, 2, 3, 4 in order, enter, and touch Enter.

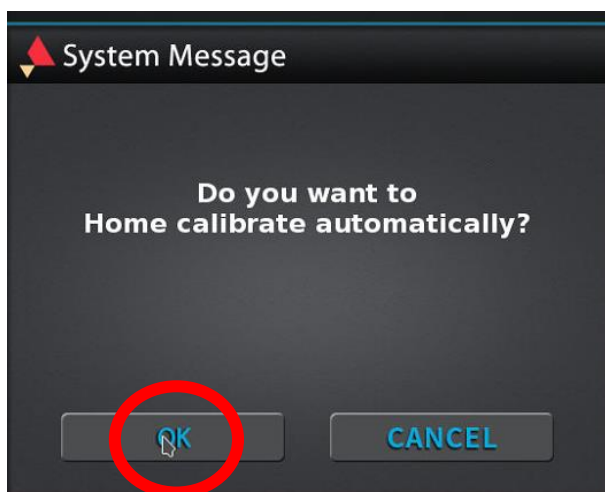
5X300P - C Phase distance error occurs during home operation.



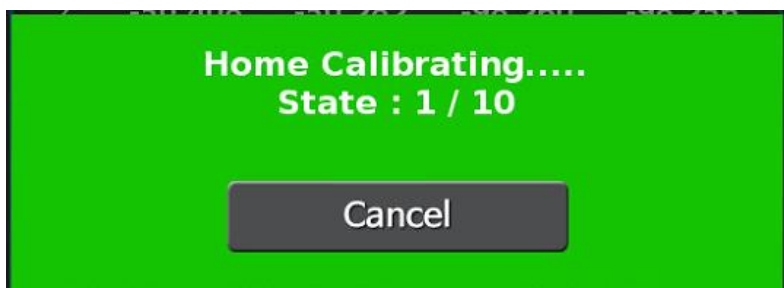
If the pass is entered, please touch it.



Now you can check that CAL HOME icon is created. Touch CAL HOME icon

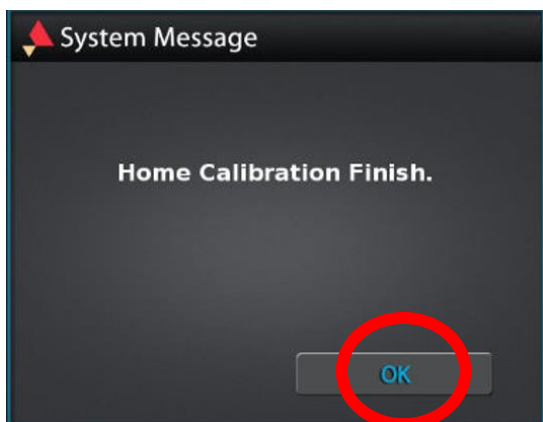


Touch OK to proceed with OK.

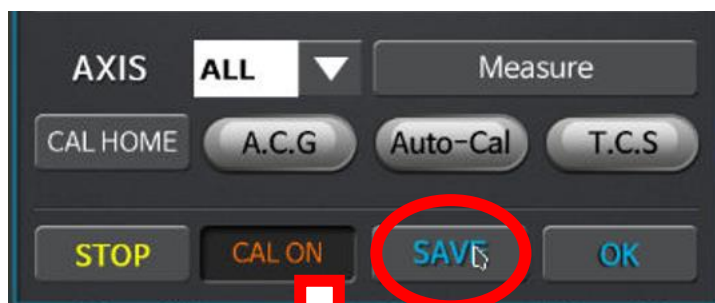


Home Calibrating...It is progressed to 10/10/10 and complete. About 13 minutes.

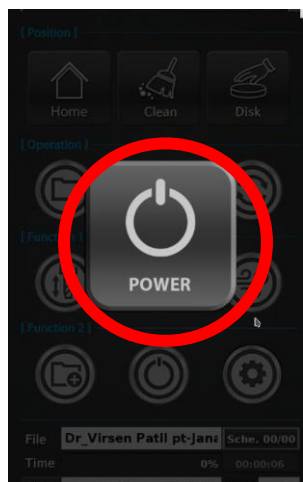
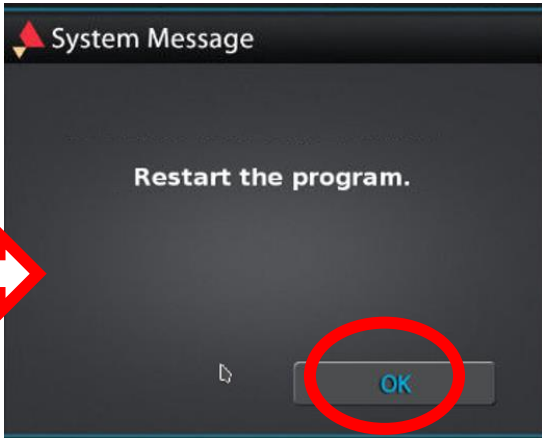
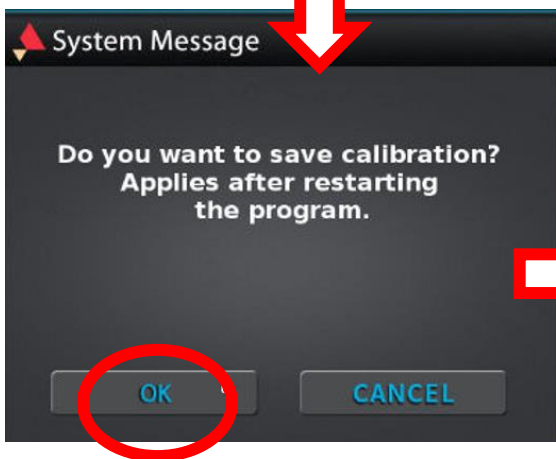
5X300P - C Phase distance error occurs during home operation.



Please press OK



You can now touch the SAVE.



When it is automatically restarted, you can now proceed with the home by clicking the power icon in the middle.