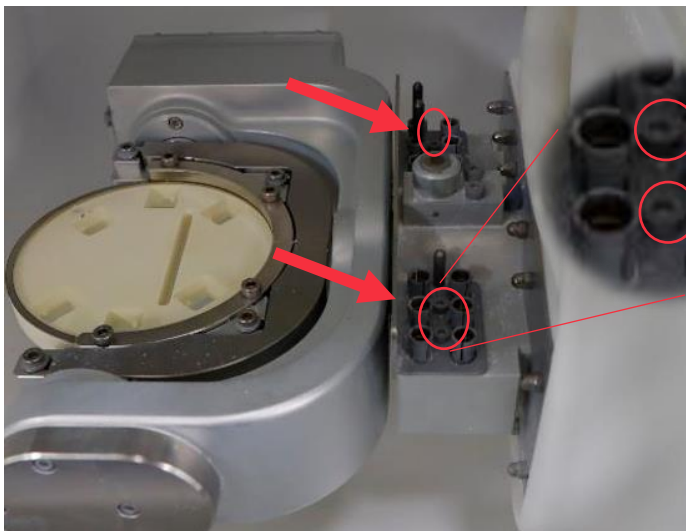


Each week, the tool pockets ensure that the pockets hold the tool normally and are not contaminated. The tool pocket removes the tool pocket cover every month to clean pockets and interior spring lights. If the tool pocket is not held properly and is open, exchange the pocket. You can proceed with the tool pocket exchange and cleaning method after removing the cover according to the method below.

- How to remove the tool pocket cover



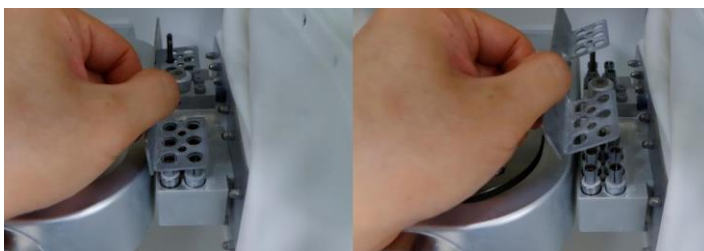
Prepare a 2.5mm hex L wrench or hex T wrench.



Loosen the 3mm bolt between the pockets using a 2.5mm hex wrench.

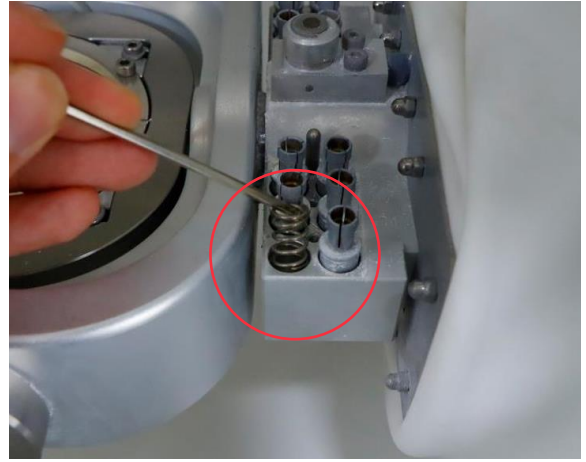


If you all four bolts, the tool port cover will be uploaded by spring.



Remove Tools cover the tool cover with hands.

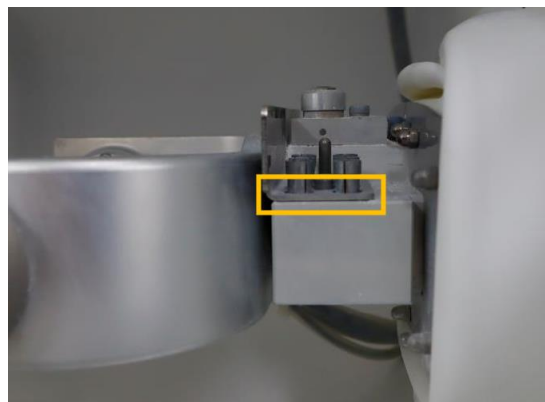
- How to remove the tool pocket cover



Remove the tool port to remove the spring and remove the spring.



Clean the inside of pocket and spread the inside of pocket and spread the glass, such as WD40.



Add clean spring and then make a jacket, and make it up a little bit more than one to fix the jacket. If the assembly is assembled, the tool pocket cover will be on the surface.

※ If it is not removed and cleaned for a long time after processing, the tool pockets may be tied up and not separated. If it is already tied up and doesn't come out, you need to apply for AS and use another tool pocket position temporarily.