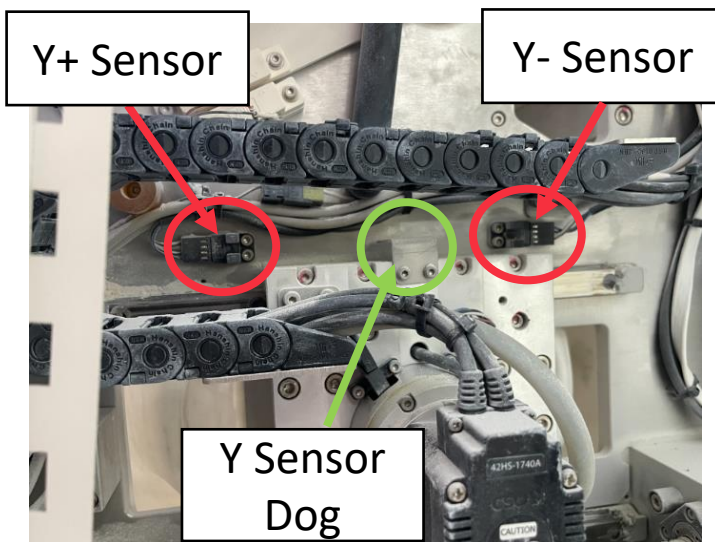
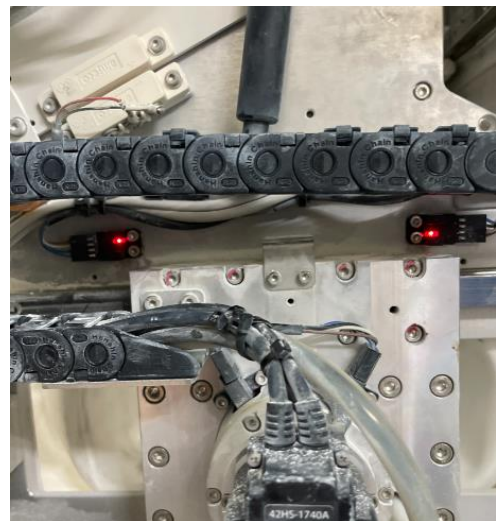


1. If the dust Y+ OT or Y- OT alarm is on one side, use the dust JOG to move it to the other side to see if it clears the alarm.
2. If both Y+ OT and Y- OT are alarmed or cannot be cleared by step 1, open the right side cover of the instrument.
3. See the image below and clean the sensors with a tissue or brush to remove any dust. A properly functioning sensor should have a solid red LED if there is no object between the sensors.
#If there is a dog between the sensors, the sensor is off and you can proceed to step 2.
4. After cleaning, proceed with CAL HOME and use the machine..



Sensor is dirty and off



Normalized after sensor cleaning (red LED on sensor)

5. If the sensor does not turn on even after cleaning the sensor, the sensor is broken and needs to be replaced..